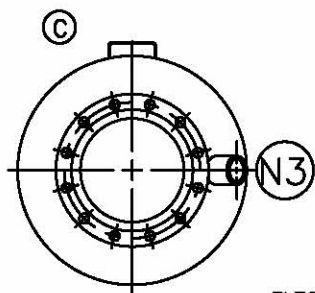
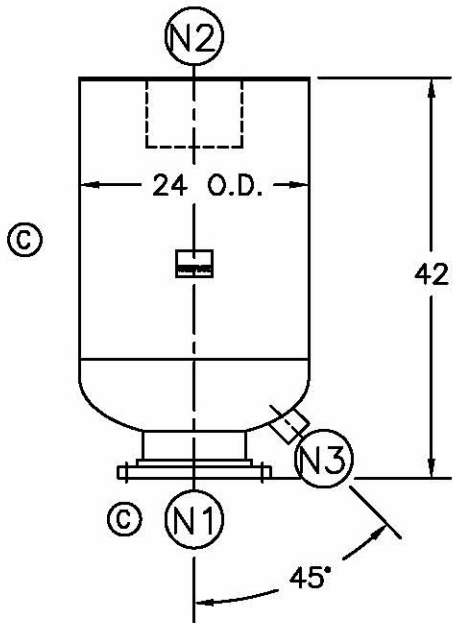


| ITEM | QTY. | NAME | DESCRIPTION |
|------|------|--------|--------------------------|
| N1 | 1 | INLET | 10" 150# RFSO ASME B16.5 |
| N2 | 1 | OUTLET | 10" STD. WT. PIPE |
| N3 | 1 | DRAIN | 2" NPT 3000# COUPLING |

| | | | | | |
|---|----------|---|------|----|----|
| A | 06/11/99 | NEW ISSUE | 6738 | AB | DP |
| B | 7/19/02 | REVISED D. TEMPERATURE | A703 | GC | VA |
| C | 12/05/03 | DELETED NAMEPL. BRACKET, NAMEPL., INLET TAG, ADDED EXHAUST HEAD NAMEPL. | B892 | LH | FM |
| D | 11/1/05 | REVISED TITLE BLOCK | D507 | FM | LH |



NOTES:

1. ALL DIMENSIONS ARE IN INCHES.
2. ALL BOLT HOLES ARE TO STRADDLE NATURAL CENTERLINES.
3. SHIPPING WEIGHT: 400 POUNDS.
4. DESIGN DATA:

DESIGN PRESSURE— ATMOSPHERIC
 (B) DESIGN TEMPERATURE— AMBIENT (MAX. 650° F)
 CORROSION ALLOWANCE— 0 INCHES

5. MATERIAL: CARBON STEEL.

Click Here
For Your Free Quote

CUSTOMER:
 REG. NO.:
 P.O. NO.:
 TAG NO.:
 PART NO.: 10EHC

FACTORY DIRECT PIPELINE PRODUCTS, INC.
<http://www.wright-austin.com>

NAME **10" TYPE "40-EHMF" EXHAUST HEAD 150# FLG (CSTL)**



ELECTRONIC FILE NAME:
 SD10EHC.DWG

TOLERANCES UNLESS OTHERWISE SPECIFIED PER ENGINEERING STANDARD ES- ---

UNAUTHORIZED USE, MANUFACTURE OR REPRODUCTION IN WHOLE OR IN PART IS PROHIBITED.

| | | | | | | | |
|----------|--------|----------------|----------|---------|-----|------|----------|
| DRAWN | AB | DATE | 06/11/99 | CHECKED | DP | DATE | 06/11/99 |
| APP | --- | DATE | --- | SCALE | NTS | ECR | 7609 |
| SIZE | DWG NO | SD10EHC | | | | REV | D |
| A | | | | | | | |