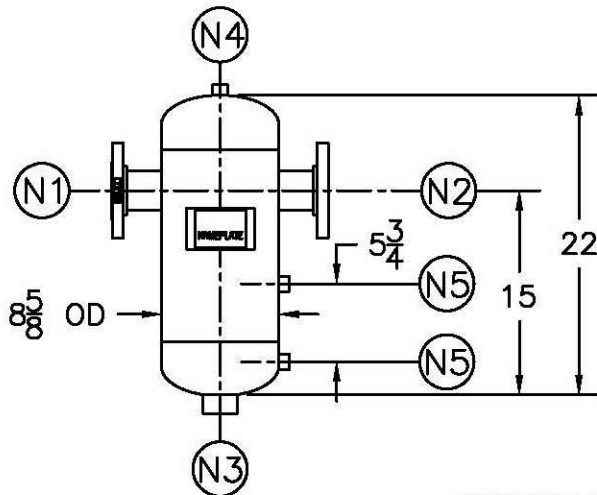
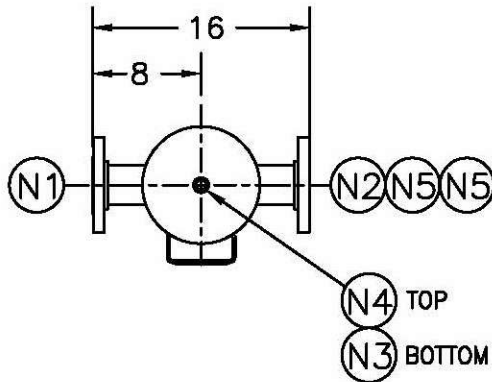


NOZZLE SCHEDULE			
ITEM	QTY.	NAME	DESCRIPTION
N1	1	INLET	2 1/2"-150# RFSO ASME B16.5
N2	1	OUTLET	2 1/2"-150# RFSO ASME B16.5
N3	1	DRAIN	1" NPT 3000# COUPLING
N4	1	VENT	1/2" NPT 3000# COUPLING
N5	2	W.G. CONNECTIONS	1/2" NPT 3000# COUPLING

REV	DATE	CHANGE	ECR	BY	APP
A	09/27/00	NEW ISSUE	8913	FG	FJM
B	11/1/05	REVISED TITLE BLOCK	D507	FM	LH



NOTES:

- UNITS ARE TO BE DESIGNED, FABRICATED, & "U" OR "UM" STAMPED (IF REQUIRED) IN ACCORDANCE WITH ASME B & PV CODE, SECTION VIII, DIVISION 1 IN COMPLIANCE TO CURRENT PUBLISHED ADDENDA.
- ALL DIMENSIONS ARE IN INCHES.
- ALL BOLT HOLES ARE TO STRADDLE NATURAL CENTERLINES.
- SHIPPING WEIGHT: 95 POUNDS.
- DESIGN DATA:
 

DESIGN PRESSURE-	500 PSIG
DESIGN TEMPERATURE-	300° F
MIN. DESIGN METAL TEMP.-	-20° F @ 500 PSIG
HYDROTEST PRESSURE-	650 PSIG
CORROSION ALLOWANCE-	0 INCHES
- MATERIAL: 304/304L STAINLESS STEEL.
- COMMERCIAL BLAST CLEANING PER SSPC-SP 6.

CUSTOMER:

REG. NO.:

P.O. NO.:

TAG NO.:

PART NO.: 2.5T500S  
2.5T500SM  
2.5T500SU

**FACTORY DIRECT PIPELINE PRODUCTS, INC.**  
<http://www.wright-austin.com>

NAME **2.5" TYPE "T" GAS/LIQUID  
SEPARATOR 300# FLG 304/304L**

ELECTRONIC FILE NAME:  
SD25T50S.DWG

TOLERANCES UNLESS OTHERWISE SPECIFIED  
PER ENGINEERING STANDARD ES- --

UNAUTHORIZED USE, MANUFACTURE OR  
REPRODUCTION IN WHOLE OR IN PART IS  
PROHIBITED.



DRAWN	FJM	DATE	01/29/01	CHECKED	LH	DATE	01/29/01
APP	FG	DATE	01/29/01	SCALE	NTS	ECR	9182
SIZE	DWG	SD2.5T500S				REV	B
A	NO						