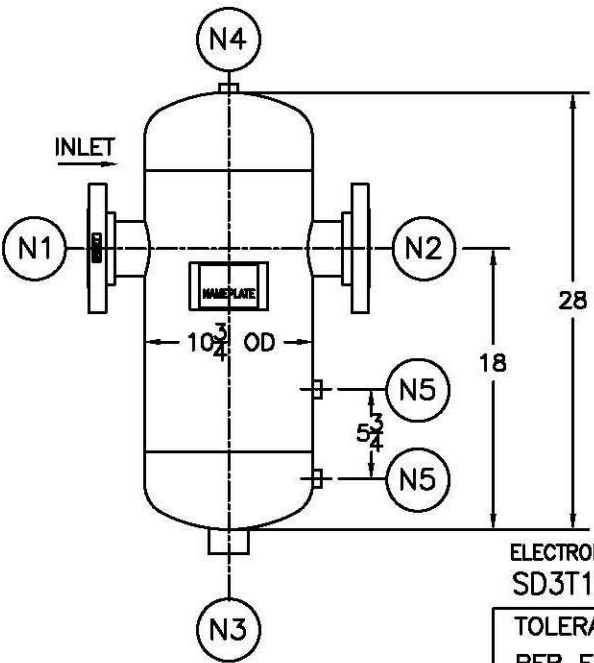
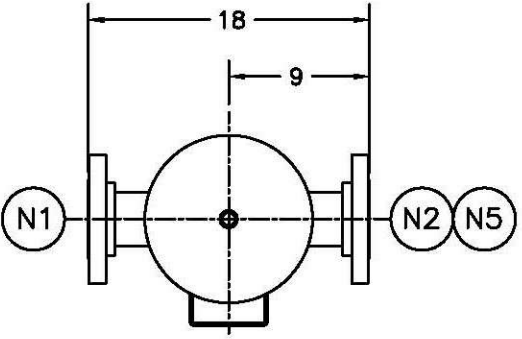


NOZZLE SCHEDULE			
ITEM	QTY.	NAME	DESCRIPTION
N1	1	INLET	3" 150# RF SO ASME B16.5
N2	1	OUTLET	3" 150# RF SO ASME B16.5
N3	1	DRAIN	1-1/2" 3000# NPT COUPLING
N4	1	VENT	1/2" NPT 3000# COUPLING
N5	2	LIQUID LEVEL	1/2" NPT 3000# COUPLING

REV	DATE	CHANGE	ECR	BY	APP
A	7/12/01	NEW ISSUE	9612	GC	FJM
B	11/1/05	REVISED TITLE BLOCK	D507	FM	LH



**NOTES:**

1. UNITS ARE TO BE DESIGNED, FABRICATED & "U" OR "UM" STAMPED IN ACCORDANCE WITH ASME BOILER & PRESSURE VESSEL CODE, SECTION VIII, DIVISION 1 IN COMPLIANCE TO CURRENT PUBLISHED ADDENDA.
2. ALL DIMENSIONS ARE IN INCHES.
3. ALL BOLT HOLES ARE TO STRADDLE NATURAL CENTERLINES.
4. SHIPPING WEIGHT: 100 POUNDS.
5. DESIGN DATA:  
 DESIGN PRESSURE- 150 PSIG  
 DESIGN TEMPERATURE- 300° F  
 MIN. DESIGN METAL TEMP.- -20° F @ 150 PSIG  
 HYDROTEST PRESSURE- 195 PSIG  
 CORROSION ALLOWANCE- 0 INCHES
6. MATERIAL: 304/304L STAINLESS STEEL

[Click Here  
For Your Free Quote](#)


**STANDARD**

CUSTOMER:
REG. NO.:
P.O. NO.:
TAG NO.:
PART NO.: 3T150S, 3T150SU, & 3T150SM

ELECTRONIC FILE NAME:  
SD3T150S.DWG

TOLERANCES UNLESS OTHERWISE SPECIFIED  
PER ENGINEERING STANDARD ES- ---

UNAUTHORIZED USE, MANUFACTURE OR  
REPRODUCTION IN WHOLE OR IN PART IS  
PROHIBITED.

	<b>FACTORY DIRECT PIPELINE PRODUCTS, INC.</b> <a href="http://www.wright-austin.com">http://www.wright-austin.com</a>		
	<b>NAME 3" TYPE "T" GAS/LIQUID SEP. 150# RF FLG. SSSL</b>		
DRAWN GC APP VH	DATE 7/12/01 DATE 7/12/01	CHECKED FJM SCALE NTS	DATE 7/12/01 ECR 9612
SIZE <b>A</b>	DWG NO <b>SD3T150S</b>	REV <b>B</b>	