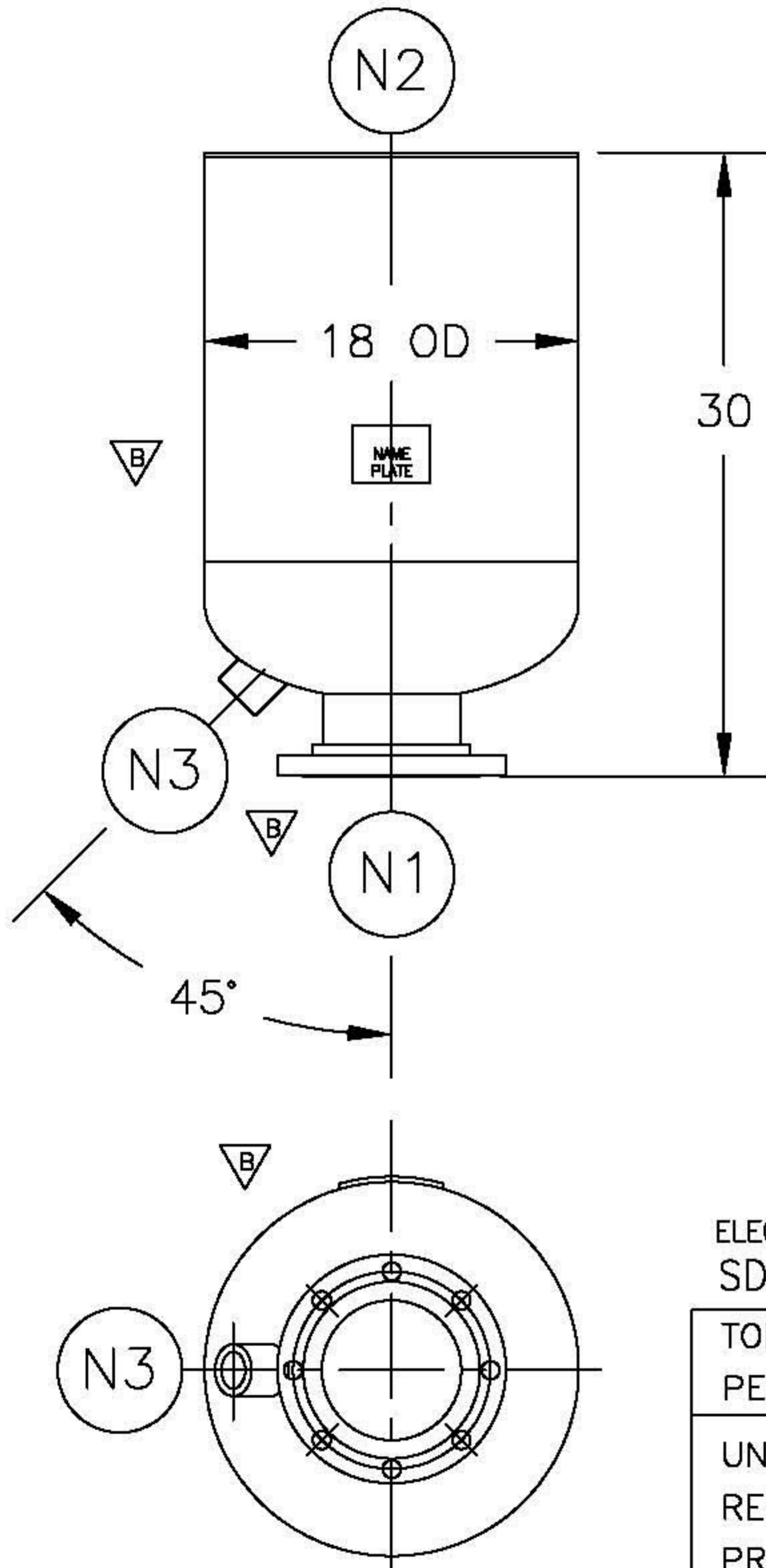


NOZZLE SCHEDULE

ITEM	QTY.	NAME	DESCRIPTION
N1	1	INLET	6"-150# RFSO ASME B16.5
N2	1	OUTLET	6-5/8" OD PIPE
N3	1	DRAIN	1-1/2" NPT 3000# COUPLING

REV	DATE	CHANGE	ECR	BY	APP
A	2/16/01	NEW RELEASE	9231	GC	FG
B	12/05/03	DELETED NAMEPL. BRACKET, NAMEPL., INLET TAG, ADDED EXHAUST HEAD NAMEPL.	B892	LH	FM
C	11/1/05	REVISED TITLE BLOCK	D507	FM	LH




NOTES:

1. ALL DIMENSIONS ARE IN INCHES.
2. ALL BOLT HOLES ARE TO STRADDLE NATURAL CENTERLINES.
3. SHIPPING WEIGHT: 140 POUNDS.
4. DESIGN DATA:  
 DESIGN PRESSURE— ATMOSPHERIC  
 DESIGN TEMPERATURE— AMBIENT  
 CORROSION ALLOWANCE— 0 INCHES
5. MATERIAL: CARBON STEEL

[Click Here  
For Your Free Quote](#)

CUSTOMER:  
 REG. NO.:  
 P.O. NO.:  
 TAG NO.:  
 PART NO.: 6EHC

		<b>FACTORY DIRECT PIPELINE PRODUCTS, INC.</b> <a href="http://www.wright-austin.com">http://www.wright-austin.com</a>					
		NAME <b>6" TYPE "40-EHMF" EXHAUST HEAD 150# FLG CSTL</b>					
DRAWN	GC	DATE	2/16/01	CHECKED	FJM	DATE	2/16/01
APP	FG	DATE	2/16/01	SCALE	NTS	ECR	9231
SIZE	DWG	SD6EHC				REV	C
A	NO						

ELECTRONIC FILE NAME:  
 SD6EHC.DWG

TOLERANCES UNLESS OTHERWISE SPECIFIED  
 PER ENGINEERING STANDARD ES- ---

UNAUTHORIZED USE, MANUFACTURE OR  
 REPRODUCTION IN WHOLE OR IN PART IS  
 PROHIBITED.