

NOZZLE SCHEDULE

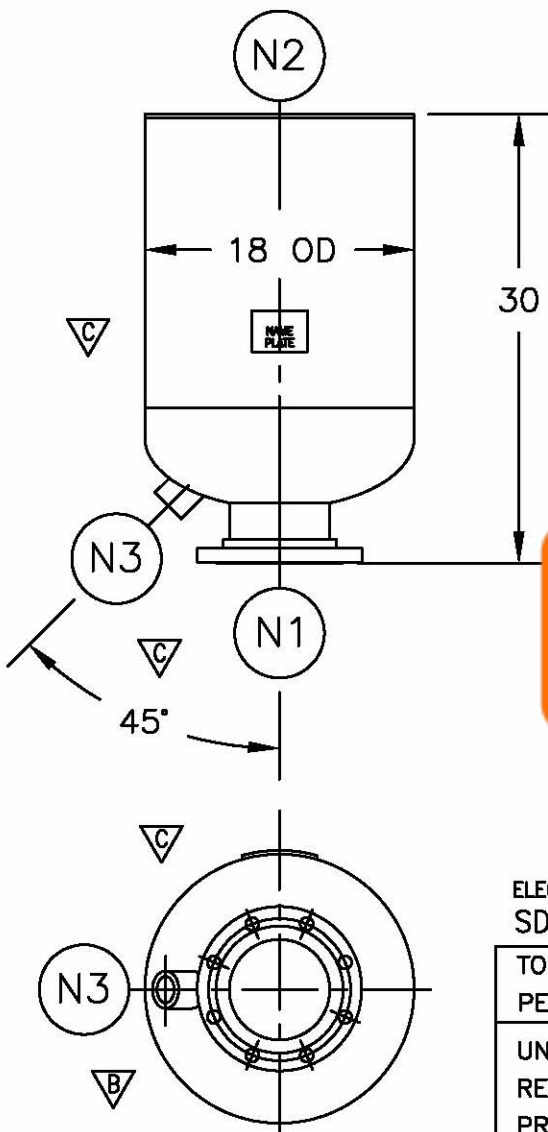
ITEM	QTY.	NAME	DESCRIPTION
N1	1	INLET	6"-150# RFSO ASME B16.5
N2	1	OUTLET	6-5/8" OD PIPE
N3	1	DRAIN	1-1/2" NPT 3000# COUPLING

REV	DATE	CHANGE	ECR	BY	APP
A	08/16/99	NEW RELEASE	7796	AB	DP
B	11/06/02	REVISED 6" 150# INLET FLG. BOLT HOLE ORIENTATION	B010	FJM	VA
C	12/05/03	DELETED NAMEPL. BRACKET, NAMEPL., INLET TAG, ADDED EXHAUST HEAD NAMEPL.	B892	LH	FM
D	11/1/05	REVISED TITLE BLOCK	D507	FM	LH

NOTES:

1. ALL DIMENSIONS ARE IN INCHES.
2. ALL BOLT HOLES ARE TO STRADDLE NATURAL CENTERLINES.
3. SHIPPING WEIGHT: 140 POUNDS.
4. DESIGN DATA:

DESIGN PRESSURE-	ATMOSPHERIC
DESIGN TEMPERATURE-	AMBIENT
CORROSION ALLOWANCE-	0 INCHES
5. MATERIAL: 304L STAINLESS STEEL.



Click Here
For Your Free Quote

ELECTRONIC FILE NAME:
SD6EHS.DWG

TOLERANCES UNLESS OTHERWISE SPECIFIED
PER ENGINEERING STANDARD ES- ---

UNAUTHORIZED USE, MANUFACTURE OR
REPRODUCTION IN WHOLE OR IN PART IS
PROHIBITED.

CUSTOMER:
REG. NO.:
P.O. NO.:
TAG NO.:
PART NO.: 6EHS

	FACTORY DIRECT PIPELINE PRODUCTS, INC. http://www.wright-austin.com				
	NAME 6" TYPE "40-EHMF" EXHAUST HEAD 150# FLG (304L SSTL)				
DRAWN	AB	DATE	08/16/99	CHECKED	DP
APP	--	DATE	--	SCALE	NTS
		DATE	--	ECR	B010
SIZE	DWG	SD6EHS			REV
A	NO				D