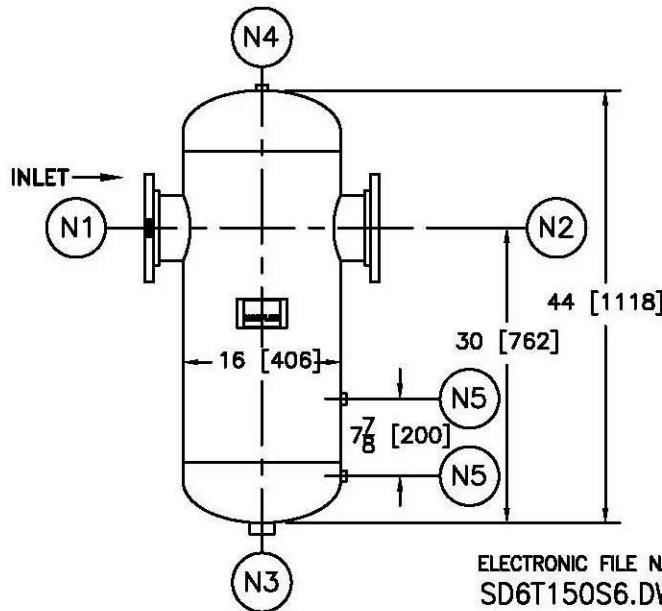
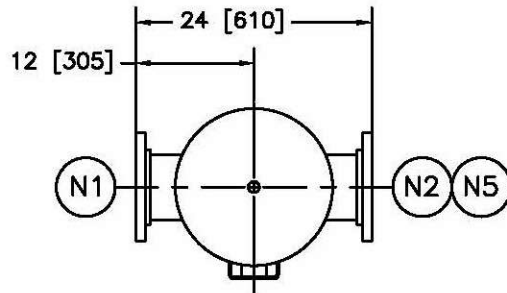


NOZZLE SCHEDULE			
ITEM	QTY.	NAME	DESCRIPTION
N1	1	INLET	6" - 150# RFSO, B16.5
N2	1	OUTLET	6" - 150# RFSO, B16.5
N3	1	DRAIN	1-1/2" - NPT 3000# COUPLING
N4	1	VENT	1/2" - NPT 3000# COUPLING
N5	2	W.G. CONNS.	1/2" - NPT 3000# COUPLING

REV	DATE	CHANGE	ECR	BY	APP
A	10/21/03	NEW RELEASE	B806	LH	VA
B	11/1/05	REVISED TITLE BLOCK	D507	FM	LH



ELECTRONIC FILE NAME:
SD6T150S6.DWG

TOLERANCES UNLESS OTHERWISE SPECIFIED
PER ENGINEERING STANDARD ES- --

UNAUTHORIZED USE, MANUFACTURE OR
REPRODUCTION IN WHOLE OR IN PART IS
PROHIBITED.

NOTES:

- UNITS ARE TO BE DESIGNED, FABRICATED, & CODE STAMPED (IF REQ'D) IN ACCORDANCE WITH ASME B & PV CODE, SECTION VIII, DIVISION 1 IN COMPLIANCE TO CURRENT PUBLISHED ADDENDA.
- ALL DIMENSIONS ARE IN INCHES [MM].
- ALL BOLT HOLES ARE TO STRADDLE NATURAL CENTERLINES.
- SHIPPING WEIGHT: 180 POUNDS.
- DESIGN DATA:

DESIGN PRESSURE-	150 PSIG
DESIGN TEMPERATURE-	300°F
MIN. DESIGN METAL TEMP.-	-20°F AT 150 PSIG
HYDROTEST PRESSURE-	195 PSIG
CORROSION ALLOWANCE-	0 INCHES
- MATERIAL: 316/316L STAINLESS STEEL.

[Click Here
For Your Free Quote](#)

CUSTOMER:
REG. NO.:
P.O. NO.:
TAG NO.:
PART NO.: 6T150S6, 6T150S6U & 6T150S6M

	FACTORY DIRECT PIPELINE PRODUCTS, INC. http://www.wright-austin.com		
	NAME 6" TYPE "T" GAS/LIQUID SEPARATOR 150# FLG 316L		
DRAWN LH	DATE 10/21/03	CHECKED FM	DATE 10/21/03
APP VA	DATE 10/21/03	SCALE NTS	ECR B806
SIZE A	DWG NO	SD6T150S6	
			REV B