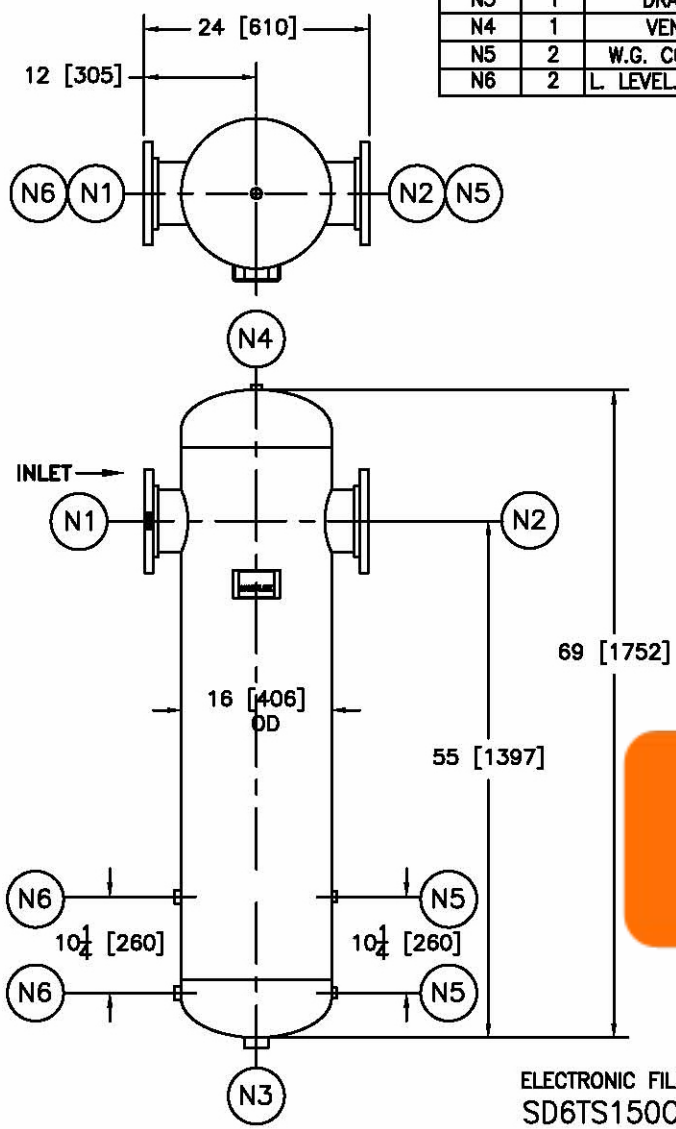


NOZZLE SCHEDULE			
ITEM	QTY.	NAME	DESCRIPTION
N1	1	INLET	6" - 150# RFSO, B16.5
N2	1	OUTLET	6" - 150# RFSO, B16.5
N3	1	DRAIN	1-1/2" - NPT 3000# COUPLING
N4	1	VENT	1/2" - NPT 3000# COUPLING
N5	2	W.G. CONNS.	1/2" - NPT 3000# COUPLING
N6	2	L. LEVEL CONN.	1" - NPT 3000# COUPLING

REV	DATE	CHANGE	ECR	BY	APP
A	01/10/07	NEW RELEASE	E401	LH	FJM



NOTES:

1. UNITS ARE TO BE DESIGNED, FABRICATED & "U" STAMPED (IF REQUIRED) IN ACCORDANCE WITH ASME B & PV CODE, SECTION VIII, DIVISION 1 IN COMPLIANCE TO CURRENT PUBLISHED ADDENDA.
2. ALL DIMENSIONS ARE IN INCHES [MM].
3. ALL BOLT HOLES ARE TO STRADDLE NATURAL CENTERLINES.
4. SHIPPING WEIGHT: 500 POUNDS.
5. DESIGN DATA:

DESIGN PRESSURE-	150 PSIG
DESIGN TEMPERATURE-	450°F
MIN. DESIGN METAL TEMP.-	-20°F AT 150 PSIG
HYDROTEST PRESSURE-	195 PSIG
CORROSION ALLOWANCE-	0 INCHES
6. MATERIAL: CARBON STEEL

Click Here
 For Your Free Quote

CUSTOMER:	-
REG. NO.:	-
P.O. NO.:	-
TAG NO.:	-
PART NO.:	6TS150C/U/M

ELECTRONIC FILE NAME:
SD6TS150C.DWG

TOLERANCES UNLESS OTHERWISE SPECIFIED
PER ENGINEERING STANDARD ES- --

UNAUTHORIZED USE, MANUFACTURE OR
REPRODUCTION IN WHOLE OR IN PART IS
PROHIBITED.

	FACTORY DIRECT PIPELINE PRODUCTS, INC. http://www.wright-austin.com			
	NAME 6" TYPE "TS" GAS/LIQUID SEPARATOR 150# FLG, C. STEEL			
DRAWN LH APP FJM	DATE 01/09/06 DATE 01/10/07	CHECKED FM SCALE NTS	DATE 01/10/06 ECR E401	
SIZE A	DWG NO	SD6TS150C		REV A