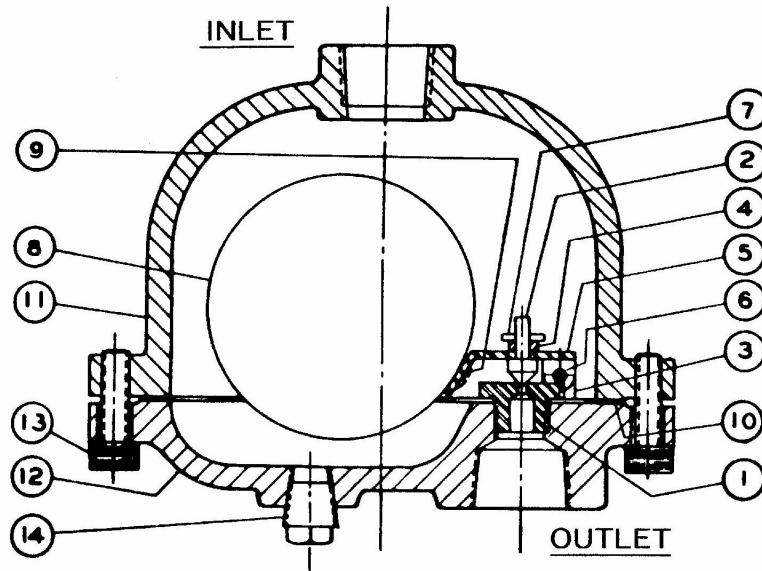


# PARTS FOR 90 and 95 FLOAT AND AIR VENT TRAPS

(SPECIFY OPERATING PRESSURE - SEE CHART BELOW)

ALL INTERNAL PARTS STAINLESS STEEL  
(NON MAGNETIC)

When several parts require replacement, we suggest that you order a Repair Kit which includes items 1-10. Indicate operating pressure.



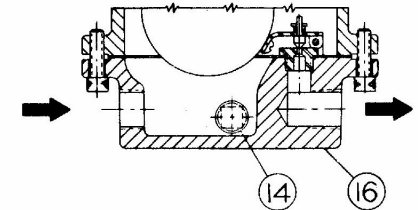
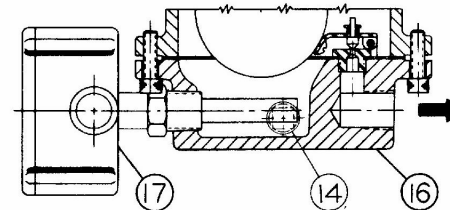
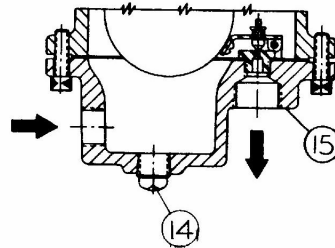
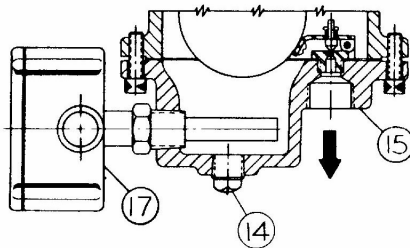
Item No.	PART NAME	No. Req'd.	90-AC TRAP 90 AIR VENT Part No.	95-AC TRAP 95 AIR VENT Part No.
1	VALVE SEAT (See Chart)	1	90-1	90-1
2	VALVE	1	90-2	90-2
3	FULCRUM HOLDER	1	90-3	90-3
4	SPACER	1	90-4	90-4
5	LEVER	1	90-5	90-5
6	FULCRUM PIN	1	90-6	90-6
7	COTTER PIN	1	1/16" x 1/2"	1/16" x 1/2"
8	FLOAT	1	90-7	252-5
9	FLOAT SCREW	1	--	--
10	GASKET	2	90-8	95-3
	REPAIR KIT (Items 1-10)	1	90-0-8	95-0-8
11	BODY	1	90-9	95-2
12	COVER	1	90-10	95-1
13	CAP SCREW	1 SET (6)	5/16"-24NF x 1"	5/16"-24NF x 1"
14	PLUG	1	3/8"	3/8" (Steel)
15	COVER 90 ACH & 90 AC-SI 95 ACH & 95 AC-SI	1	90-11	95-11
16	COVER 90 ACH-SO 90 AC-SI-SO	1	90-12	--
17	HEATING ELEMENT	1	50 WATT	50 WATT

90 & 95 ACH

90 & 95 AC-SI  
(SIDE INLET)

90 ACH-SO (SIDE OUTLET)

90 AC-SI-SO  
(SIDE INLET-SIDE OUTLET)



## MAINTENANCE INSTRUCTIONS

### To Replace Valve and Seat:

A new Valve or Seat will not seat perfectly with an old valve or seat; therefore, replace both.

1. Remove Cover (Item 12, 15, or 16) from Body (Item 11) and hold Cover in vise.
2. Remove Fulcrum Pin (Item 6).
3. Remove Cotter Pin (Item 7) and Spacer (Item 4).
4. Replace new Valve (Item 2).
5. Remove Valve Seat (Item 1) with a Socket Wrench and replace. Assemble in reverse order using a new gasket (Item 10).

If additional information is desired ask for the following Bulletins:  
TB 561 on Air Vent Traps, No. 814 Compressed Air and Gas Traps,  
TB 558 on Installation Instructions.

## SELECTION CHART

TRAP NO.	DIFFERENTIAL PRESSURE (PSI)			
	5/32" Orifice	1/8" Orifice	3/32" Orifice	5/64" Orifice
90	0 to 50 PSI	0 to 100 PSI	0 to 150 PSI	0 to 250 PSI
95	0 to 150 PSI	0 to 200 PSI	0 to 250 PSI	N/A

QUICK & DISCOUNTED PRICING  
**CLICK HERE**  
OR CALL (908) 362-9981

WRIGHT  AUSTIN



FACTORY DIRECT PIPELINE PRODUCTS, INC.  
<http://www.wright-austin.com>

PB-662Q