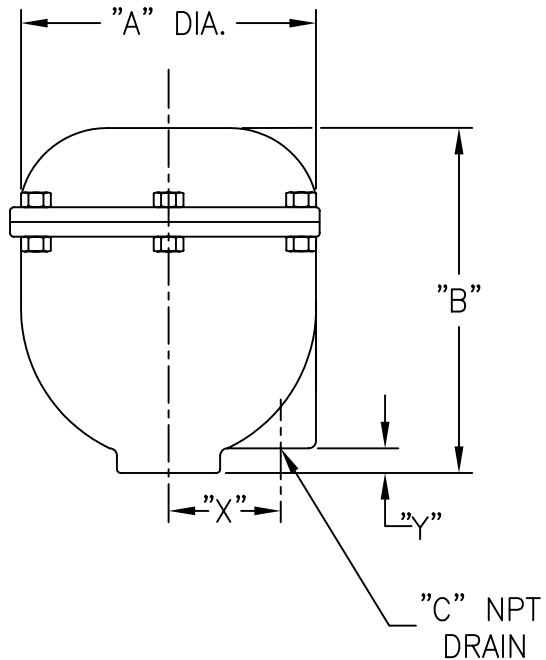


PIPE SIZE (NOMINAL)	"A"		"B"		"C"		"X"		"Y"		WEIGHT lbs [kg]	PART NO.
	IN.	MM	IN.	MM	IN.	MM	IN.	MM	IN.	MM		
1 [25]	5.25	133	6.13	156	1/2	[15]	1.94	49	0.19	5	11 [5.0]	1.40EHC
1-1/2 [40]	5.25	133	6.13	156	1/2	[15]	1.94	49	0.19	5	11 [5.0]	1.540EHC
2 [50]	7.50	191	8.88	225	3/4	[20]	2.81	71	0.38	10	25 [11.4]	2.40EHC
2-1/2 [65]	7.50	191	8.88	225	3/4	[20]	2.81	71	0.38	10	25 [11.4]	2.540EHC
3 [80]	8.75	222	11.25	286	3/4	[20]	3.19	81	1.0	25	40 [18.2]	3.40EHC
4 [100]	10.00	254	11.88	302	1	[25]	3.81	97	1.0	25	50 [22.7]	4.40EHC

NOTES:

- ALL DIMENSIONS ARE IN INCHES [MM].
- ALL BOLT HOLES ARE TO STRADDLE NATURAL CENTERLINES.
- SHIPPING WEIGHT: SEE TABLE
- DESIGN DATA:

DESIGN PRESSURE-	ATMOSPHERIC
DESIGN TEMPERATURE-	AMBIENT (MAX. 450° F)
CORROSION ALLOWANCE-	0 INCHES
- MATERIAL: CAST IRON



MAXIMUM CAPACITY		
SIZE	LBS/HR STEAM	SCFM AIR
1"	160	45
1½"	370	100
2" - 2½"	1,000	280
3"	2,100	500
4"	2,700	700
5"	4,000	1,100
6"	6,000	1,700
8"	10,500	2,900
10"	16,000	4,500

CUSTOMER:
REG NO.:
P.O. NO.:
TAG NO.:
PART NO.: SEE TABLE

EATON	EATON FILTRATION, LLC 900 FAIRMOUNT AVENUE, ELIZABETH, NEW JERSEY 07207		
	NAME EXHAUST HEAD (CAST IRON), NPT THREADED SIZES 1" - 4"		
DRAWN FF	DATE 5/24/06	CERT. FM	DATE 5/24/06
SIZE A	DWG NO	SDEHCIT	
			REV B

QUICK & DISCOUNTED PRICING
[CLICK HERE](#)
 OR CALL (908) 362-9981

ELECTRONIC FILE NAME: SDEHCIT
REF. ECR D957 DATE 5/24/06

UNAUTHORIZED USE, MANUFACTURE OR REPRODUCTION IN WHOLE OR IN PART IS PROHIBITED. DRAWING, DESIGN AND OTHER DISCLOSURES PROPERTY OF EATON FILTRATION, LLC