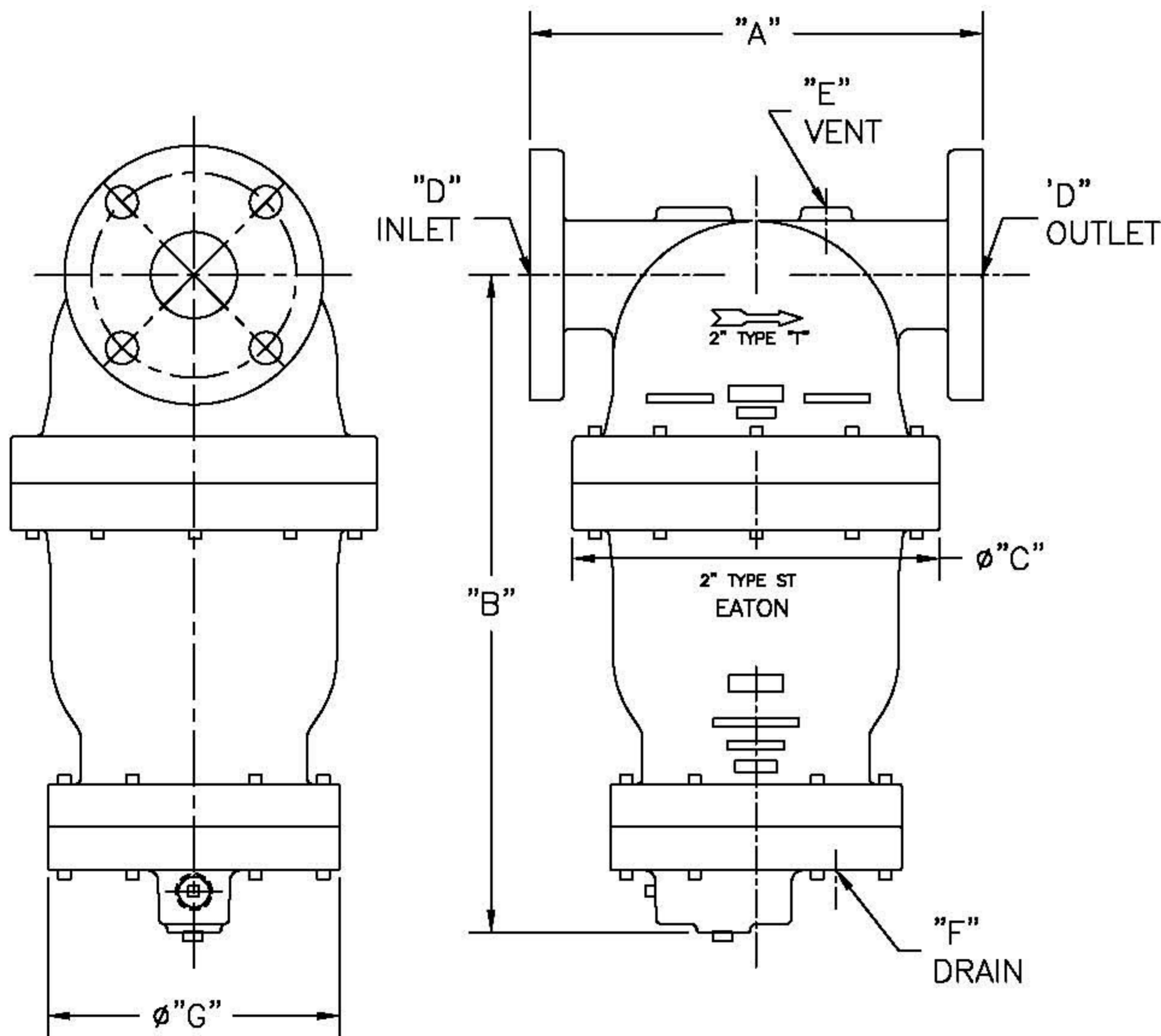



PIPE SIZE (NOMINAL) IN. MM	DIMENSIONS							DRY WEIGHT		PART NO.
	"A" IN. MM	"B" IN. MM	"C" IN. MM	"D" CONNECTION	"E" VENT	"F" DRAIN	"G" IN. MM	LBS	KGS	
2 (50)	10.50 / 267	15.31 / 389	8.50 / 216	2" ANSI CLASS 125 FF	1/4" NPT	3/4" NPT	6.75 / 171	51 / 23.2		2.STFN
3 (80)	14 / 356	20.44 / 519	11.38 / 289	3" ANSI CLASS 125 FF	1/4" NPT	3/4" NPT	6.75 / 171	100 / 45.5		3.STFN
4 (100)	15.88 / 403	23.50 / 597	14.06 / 357	4" ANSI CLASS 125 FF	1/4" NPT	3/4" NPT	6.75 / 171	225 / 102.3		4.STN
5 (125)	18.38 / 467	31.00 / 787	17.00 / 432	5" ANSI CLASS 125 FF	1/4" NPT	3/4" NPT	6.75 / 171	390 / 176.9		5.STN

NOTES:

- UNITS ARE TO BE DESIGNED, FABRICATED & CODE STAMPED (IF REQUIRED) IN ACCORDANCE WITH ASME B & PV CODE, SECTION VIII, DIVISION 1 IN COMPLIANCE TO CURRENT PUBLISHED ADDENDA.
- ALL DIMENSIONS ARE IN INCHES [MM].
- DESIGN DATA:
 DESIGN PRESSURE & TEMPERATURE— 150 PSIG [10.3 BARS] @ 353° F [178.3° C]
 125 PSIG [8.62 BARS] @ 450° F [232.2° C]
 MIN. DESIGN METAL TEMP.— -20° F @ 150 PSIG
 [-28.9° C @ 10.3 BARS]
 HYDROTEST PRESSURE— 300 PSIG [20.7 BARS]
 CORROSION ALLOWANCE— 0 INCHES
- MATERIAL: CAST IRON, SA-278 CLASS 30



CERTIFIED FOR:
 P.O. NO.:
 S.O. NO.:
 QUOTE NO.:
 TAG NO.:

	FACTORY DIRECT PIPELINE PRODUCTS, INC. HTTP://WWW.FDPP.COM			
	NAME TYPE "ST" GAS LIQUID SEPARATOR FLANGED LINE CONNECTIONS CAST IRON			
DRAWN VA	DATE 01/20/04	CERT. FM	DATE 01/20/04	
SIZE A	DWG NO	SD-STFN		REV E

UNAUTHORIZED USE, MANUFACTURE OR REPRODUCTION IN WHOLE OR IN PART IS PROHIBITED.

ELECTRONIC FILE NAME: SD-STFN.DWG
 REF. ECR D507 DATE 10/18/05