

HAYWARD PART NO.	DIMENSIONS						WEIGHT							
	"A" NOM. IN. MM		"B" IN. MM		"C" IN. MM		"D" IN. MM		"E" IN. MM		"F" IN. MM		LBS	KGS
3.31LSTFN	3 / 75		25.00 / 635		9.00 / 229		7.63 / 194		6.75 / 171		0.81 / 21		115	52.2
4.31LSTFN	4 / 100		27.25 / 692		9.88 / 251		9.63 / 245		6.75 / 171		0.81 / 21		160	72.6

NOTES:

1. ALL DIMENSIONS ARE IN INCHES [MM].

2. DESIGN DATA:

DESIGN PRESSURE- 150 PSIG [10.3 BARS]

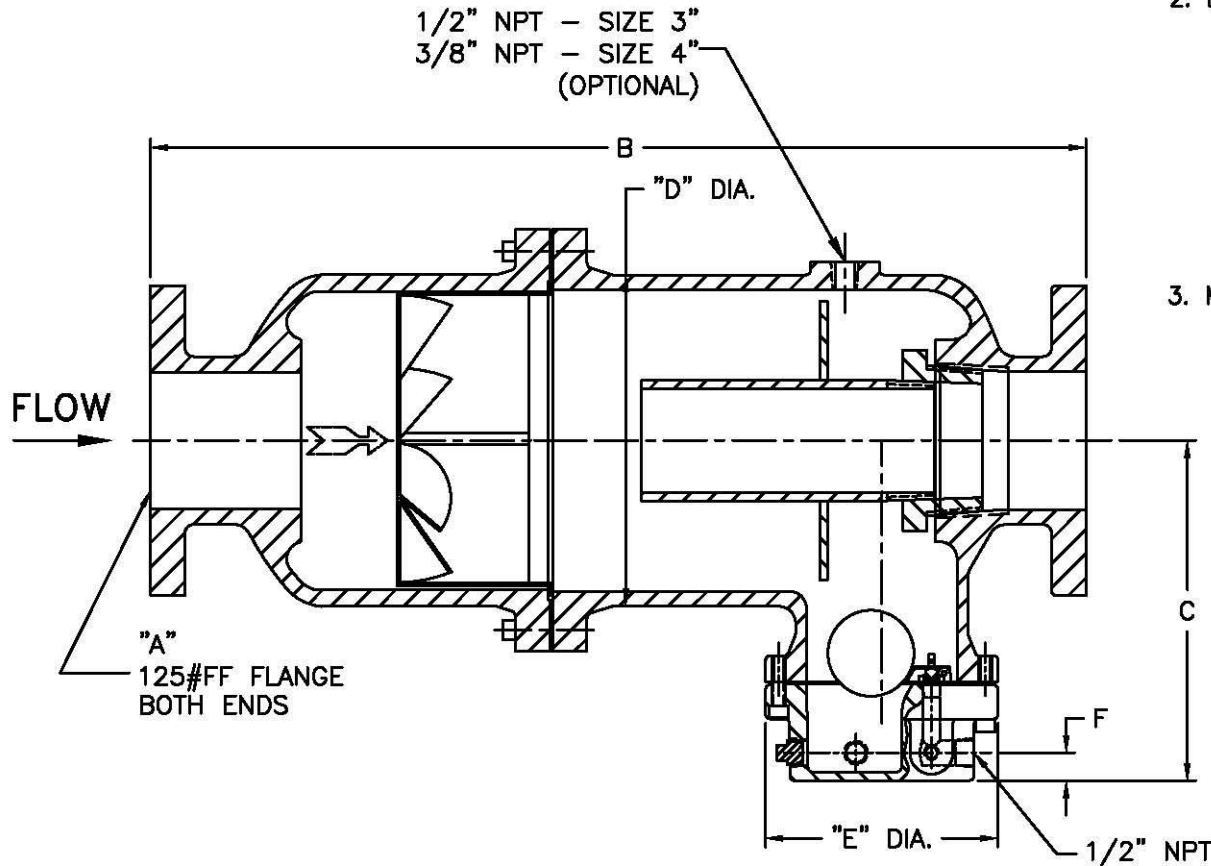
DESIGN TEMPERATURE- 353° F [178.3 °C]

DESIGN PRESSURE- 125 PSIG [8.62 BARS]

DESIGN TEMPERATURE- 450° F [232.2 °C]

MIN. DESIGN METAL TEMP.- -20° F @ 150 PSIG
[-28.9° C @ 10.3 BARS]

3. MATERIAL: BODY & COVER - CAST IRON, SA-278 CLASS 40
INTERNALS - STAINLESS STEEL
GASKET - NON-ASBESTOS



CERTIFIED FOR:

P.O. NO.:

S.O. NO.:

QUOTE NO.:

TAG NO.:

	FACTORY DIRECT PIPELINE PRODUCTS, INC. http://www.wright-austin.com			
	NAME TYPE 31L-STF GAS / LIQUID 125#FF FLANGE SEPARATOR - TRAP SIZES 3" - 4" CAST IRON			
DRAWN FM	DATE 6/24/04	CERT. VAA	DATE 6/25/04	
SIZE A	DWG NO	SD31LSTFN		REV A

UNAUTHORIZED USE, MANUFACTURE OR REPRODUCTION IN WHOLE OR IN PART IS PROHIBITED.

ELECTRONIC FILE NAME: SD31LSTFN.DWG
REF. ECR C409 DATE 6/25/04