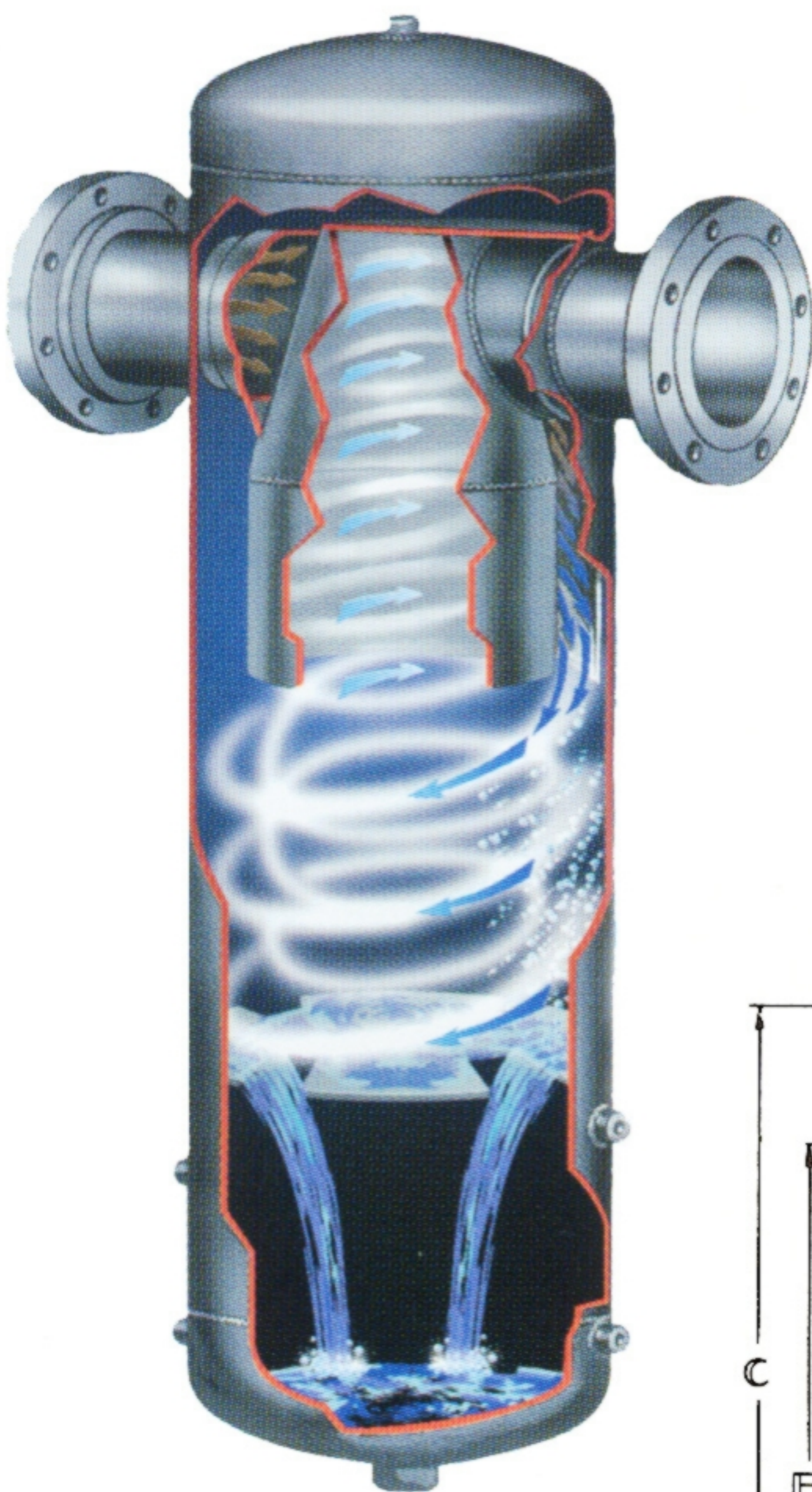


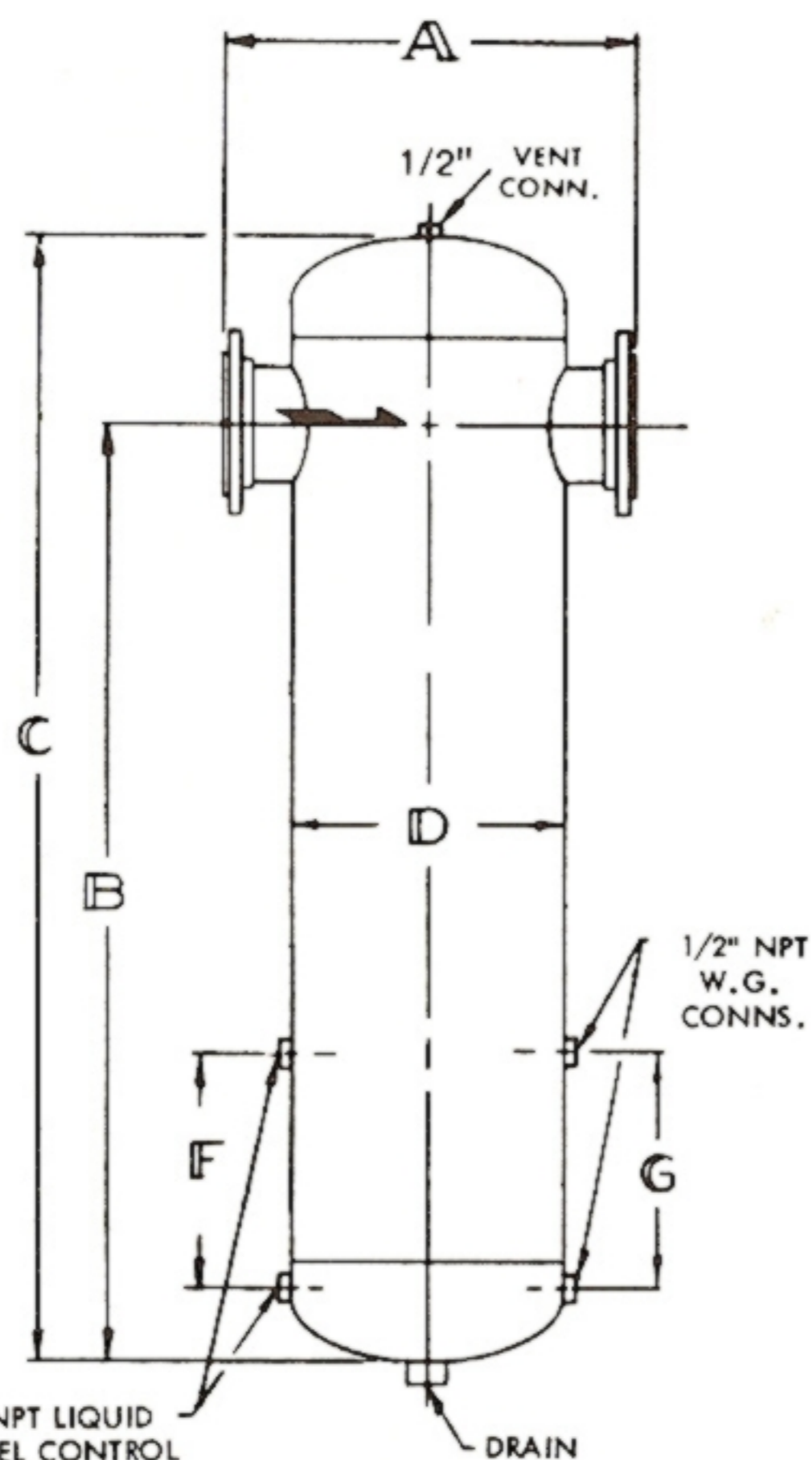
TYPE "T-S" GAS/LIQUID SEPARATOR (CARBON STEEL) WITH ANSI FLANGES

DIMENSIONS AND WEIGHTS



Pipe Size	Thr'd. & Sock. Weld. A	Flanged A	B	C	D	F	G	NPT Drain		Thr'd. & Sock. Weld.	150# Flg's.	300# Flg's.	Liquid Hold Up Capacity (Cubic Feet)	
								Std.	Opt'l.					
1"	6 7/8"	10 1/2"	22"	28"	5 9/16"	-	7 7/8"	1"	1 1/2"	Design 1000 PSIG @ 650° F Wgt.	44	47	49	0.19
1 1/4"	6 7/8"	10 1/2"	22"	28"	5 9/16"	-	7 7/8"	1"	1 1/2"	Design 1000 PSIG @ 650° F Wgt.	45	50	52	0.19
1 1/2"	7 7/8"	11 1/2"	24"	30"	6 5/8"	9 1/8"	9 1/8"	1"	2"	Design 1000 PSIG @ 650° F Wgt.	83	69	75	0.20
2"	7 7/8"	11 1/2"	24"	30"	6 5/8"	9 1/8"	9 1/8"	1"	2"	Design 1000 PSIG @ 650° F Wgt.	85	74	78	0.20
2 1/2"	-	16"	27"	35"	8 5/8"	9 1/8"	9 1/8"	1"	2"	Design 1000 PSIG @ 650° F Wgt.	-	122	132	0.39
3"	-	18"	30"	38"	10 3/4"	9 1/8"	9 1/8"	1 1/2"	2 1/2"	Design 1000 PSIG @ 650° F Wgt.	-	170	180	0.66
4"	-	20"	36"	45"	12 3/4"	10 1/4"	10 1/4"	1 1/2"	2 1/2"	Design 1000 PSIG @ 650° F Wgt.	-	225	250	1.07
5"	-	22"	40"	50"	14"	10 1/4"	10 1/4"	1 1/2"	2 1/2"	Design 1000 PSIG @ 650° F Wgt.	-	265	335	1.35
6"	-	24"	55"	66"	16"	10 1/4"	10 1/4"	1 1/2"	2 1/2"	Design 1000 PSIG @ 650° F Wgt.	-	400	435	3.03
8"	-	28"	62"	75"	18"	11 7/8"	11 7/8"	2"	3"	Design 1000 PSIG @ 650° F Wgt.	-	545	700	3.83
10"	-	34"	76"	91"	24"	11 7/8"	11 7/8"	2"	3"	Design 1000 PSIG @ 650° F Wgt.	-	800	1355	6.94
12"	-	38"	82"	99"	28"	11 7/8"	11 7/8"	2 1/2"	4"*	Design 1000 PSIG @ 650° F Wgt.	-	1090	1735	11.74
14"	-	42"	89"	108"	32"	12 5/8"	12 5/8"	2 1/2"	4"*	Design 1000 PSIG @ 650° F Wgt.	-	1335	2535	16.81
16"	-	47"	98"	119"	36"	12 5/8"	12 5/8"	3"	5"*	Design 1000 PSIG @ 650° F Wgt.	-	1850	3200	20.22
18"	-	54"	108"	132"	42"	12 5/8"	12 5/8"	3"	5"*	Design 1000 PSIG @ 650° F Wgt.	-	2600	5025	22.99
20"	-	62"	118"	145"	48"	15"	15"	3"	5"*	Design 1000 PSIG @ 650° F Wgt.	-	3275	6480	26.47
22"	-	64"	121"	149"	48"	15"	15"	3"	5"*	Design 1000 PSIG @ 650° F Wgt.	-	3450	7000	26.47
24"	-	70"	127"	158"	54"	15"	15"	4"*	6"*	Design 1000 PSIG @ 650° F Wgt.	-	4940	9020	32.64

*Flanged Drain



FOUR ANGLE LEGS OR BASE PLATES OPTIONAL

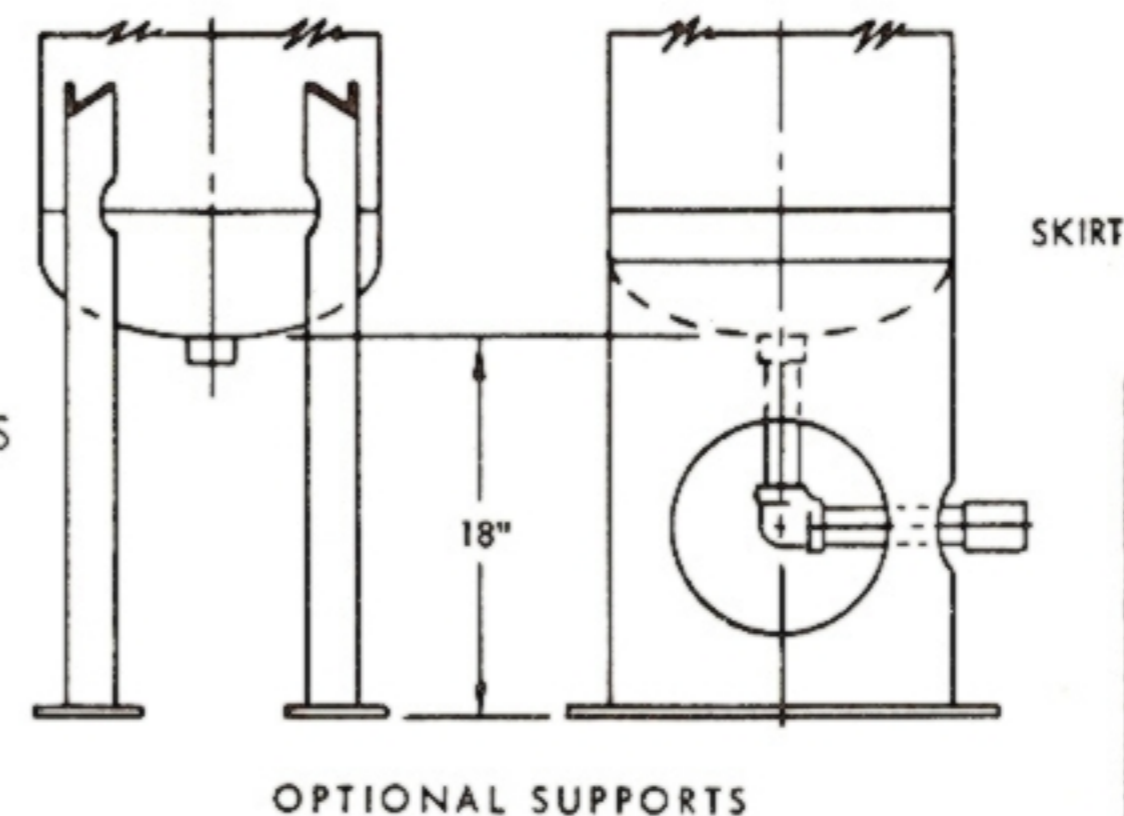
SEE REVERSE SIDE

The "Type T-S" separators are of welded steel construction in accordance with ASME code for unfired pressure vessels. Available in stainless steel on request. Inlet and outlet connections can be rotated radially, if specified.

PERFORMANCE

Type "T-S" entrainment separator when properly sized, installed and drained, will remove 99% of all liquid and solid entrainment where the particle size exceeds ten microns.

For Trap selection - request: Bulletin 808 (Steam)
Bulletin 814 (Air-Gas)



NOTE:

Include vent line for air and gas installation.

CERTIFIED FOR DIMENSIONS

QUICK & DISCOUNTED PRICING

[CLICK HERE](#)

OR CALL (908) 362-9981

TB-536L